



Co-funded by
the European Union

HEVI
Helsinki+Espoo+Vantaa
INNOVATIONS

Implementing District Energy Cooperation



The Finnish project **ENPA – Energy as a Service in Urban District Areas (Energiapalvelumalli alueille)** develops a business-driven energy service model. The project is carried out by the cities of Helsinki, Espoo, and Vantaa, along with Metropolia University of Applied Sciences, November 1, 2023 – October 31, 2026.

ENPA is an EU co-funded project within the Helsinki+Espoo+Vantaa Innovations (HEVi) program. The total budget is 924 043 euros, of which the EU funding is 554 425 euros.



Cities make long-term decisions and investments that impact energy consumption — and, consequently, carbon dioxide emissions. The **ENPA project** explores the procurement of low-carbon energy service solutions at the district and block level, using real pilot sites in the Helsinki metropolitan area.

Within the project, the cities of **Espoo, Helsinki, and Vantaa**, together with **Metropolia University of Applied Sciences** will develop a model for implementing district energy services in cooperation with companies. This will be achieved through co-creation and knowledge exchange. The operating model will help cities establish energy-efficient and low-emission areas.

Project Objectives

Developing district energy service models: we enhance the planning and implementation of district energy service models through collaboration with companies, including knowledge sharing, market dialogue, networking, and training.

Creating an operational model for cities: we develop a model for procuring district energy services using pilot areas.

Improving the district energy market: we promote the use of locally produced energy and energy recycling, creating new business opportunities.

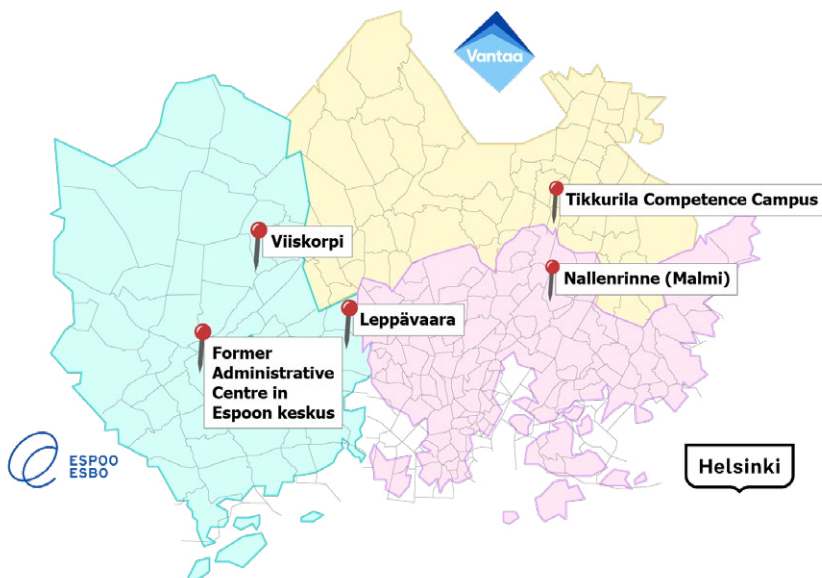
District/Block = A district or block refers to a group of several adjacent buildings in the same or nearby properties.

Training Courses of the Project

Metropolia University of Applied Sciences has extensive expertise in the construction sector. Within the ENPA project, Metropolia will design and implement training courses tailored to energy service companies and their potential customers based on their needs and expectations.

Energy as a Service (EaaS) Model =
A company provides energy as a service to a customer. The customer only pays for the energy bill, without incurring costs for initial investments, system operation, or maintenance.





Pilot Sites of the Project

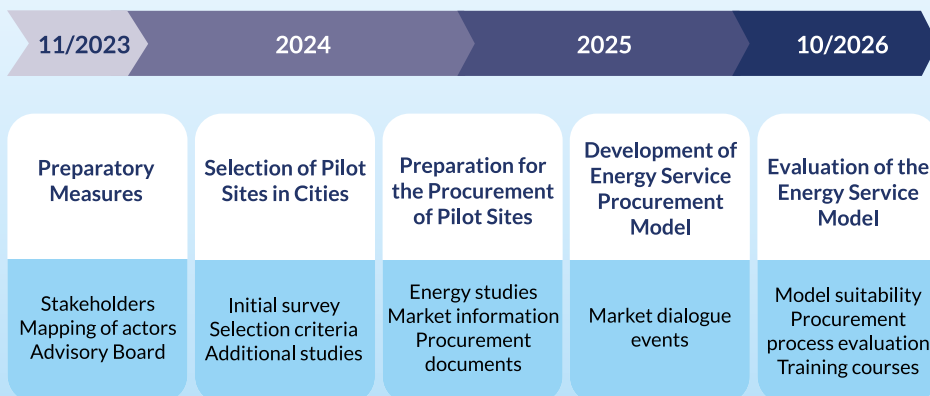
The ENPA project develops its solutions by analyzing urban pilot sites:

- Helsinki: Nallenrinne in Malminkenttä
- Espoo: Centre of Leppävaara, Former Administrative Centre in Espoon keskus and Viiskorpi
- Vantaa: Tikkurila Competence Campus.

Collaboration with companies is put into practice on the pilot sites. These pilots provide valuable insights into:

- Which areas are suitable for the energy service model.
- How to engage stakeholders in the model.
- What contractual frameworks are needed for implementation.

Project Timeline



Interested? Get in touch!

City of Helsinki

Timo Määttä – timo.maatta@hel.fi

City of Espoo

Joni Mäkinen – joni.makinen@espoo.fi

City of Vantaa

Siiri Söyrinki – siiri.soyrinki@vantaa.fi

Metropolia University of

Applied Sciences

Jaana Numminen –

jaana.numminen@metropolia.fi

ENPA Project in a Nutshell

Implementing Organizations

City of Helsinki

City of Espoo

City of Vantaa

Metropolia University of Applied Sciences

Funding

ENPA is co-funded by the European Regional Development Fund (ERDF) and is part of the Helsinki+Espoo+Vantaa Innovations (HEVi) program. The funding authority is Helsinki-Uusimaa Regional Council.

Budget

924 043 € (EU funding 554 425 €)

Duration

November 1, 2023 – October 31, 2026

Stay Updated on ENPA's Progress, Activities, and Events!



Project Website:
hevinnovations.fi/enpa/



LinkedIn Page:
Innovatiiviset energiaratkaisut Uudellamaalla
<https://www.linkedin.com/company/innovatiiviset-energiaratkaisut-uedellamaalla>



Co-funded by
the European Union

innocities

